



This project has received funding from the European Union's Seventh Programme for research, technological development and demonstration under grant agreement No [308417].



## New Directions in Seismic Hazard Assessment through Focused Earth Observation in the Marmara Supersite

Grant Agreement Number: 308417

co-funded by the European Commission within the Seventh Framework Programme

THEME [ENV.2012.6.4-2]

[Long-term monitoring experiment in geologically active regions of Europe prone to natural hazards: the Supersite concept]

### D3.11

## Temporary license of the updated SARscape advanced InSAR processing chain

Project Start Date	1 November 2012
Project Duration	36 months
Project Coordinator /Organization	Nurcan Meral Özel / KOERI
Work Package Number	WP3
Deliverable Name/ Number	Temporary license of the updated SARscape advanced InSAR processing chain/ D3.11
Due Date Of Deliverable	30 June 2014
Actual Submission Date	30 June 2014
Organization/Author (s)	SARMAP

Dissemination Level		
PU	Public	
PP	Restricted to other programme participants (including the Commission)	
RE	Restricted to a group specified by the consortium (including the Commission)	
CO	Confidential, only for members of the consortium (including the Commission)	

## TABLE OF CONTENTS

<u>1. INTRODUCTION.....</u>	<u>3</u>
<u>2. SOFTWARE DESCRIPTION AND SAMPLE RESULTS. ....</u>	<u>3</u>
2.1 EXTENSION OF STANDARD INSAR.....	3
2.2 EXTENSION OF STACKING PROCESSING .....	4
<u>ANNEX I: DOWNLOADS .....</u>	<u>7</u>

# 1. INTRODUCTION

This deliverable concerns the Task number 6: “Integrating a few independent atmospheric artifacts reduction into PSInsar and SBAS analysis”. The objective of this task is to provide a SARscape software license with the features required by the MARSite consortium.

SARscape has been updated with automatic data support for MERIS, MODIS and the ECMWF datasets and it is now capable of importing and processing a stack of geocoded atmospheric phase delays matching the SAR acquisition dates. Moreover, the SARscape stacking processing has been updated to exploit these new layers during the interferogram generation phase.

The goal is to extract the atmospheric phase delay deformation from external and independent sources such as optical satellites (MODIS or MERIS), GPS, or global numerical weather forecasts (ECMWF). The atmosphere phase delay is proportional to the water vapor column present during the SAR acquisition.

## 2. SOFTWARE DESCRIPTION AND SAMPLE RESULTS.

### 2.1 Extension of standard INSAR

The first update concerning the MARSite project is about the standard SARscape interferometry module. Users can now reduce atmospheric artifacts before the *phase to height* and *phase to displacement* steps. The correction is typically applied to the flattened and filtered interferogram, and the user can choose which sensor has the best performance among MERIS, OSCAR (obtained from the MODIS sensor) or ECMWF. In the following example (Figures 1 and 2), the sensor used is MERIS and the correction is carried on an interferogram covering an earthquake in Iran.

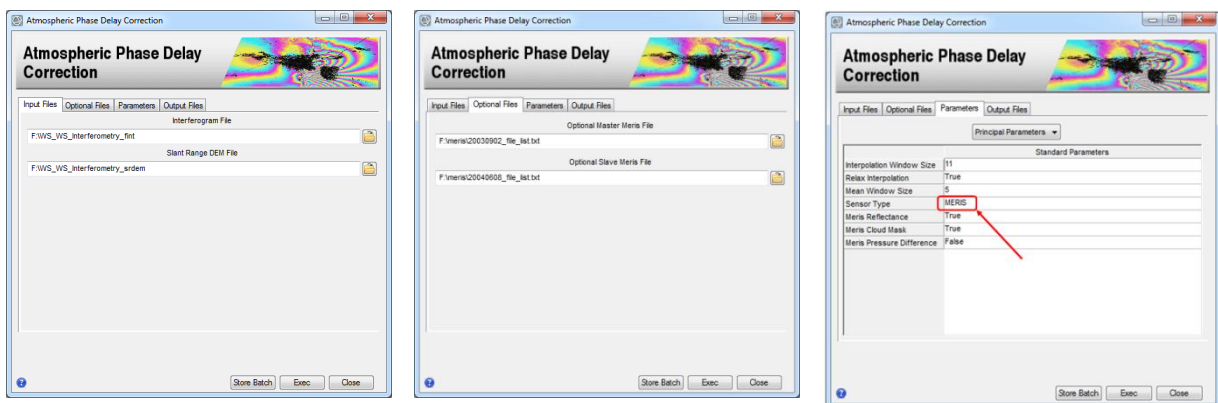


Figure 1: Atmospheric Phase Delay Correction tool. This tool removes the atmospheric artefacts from a single interferogram. Input tab, with the ‘corrupted’ interferogram (left). The input MERIS acquisitions relative to the master and slave acquisition times (center). Sensor type selected in this case is MERIS (right).

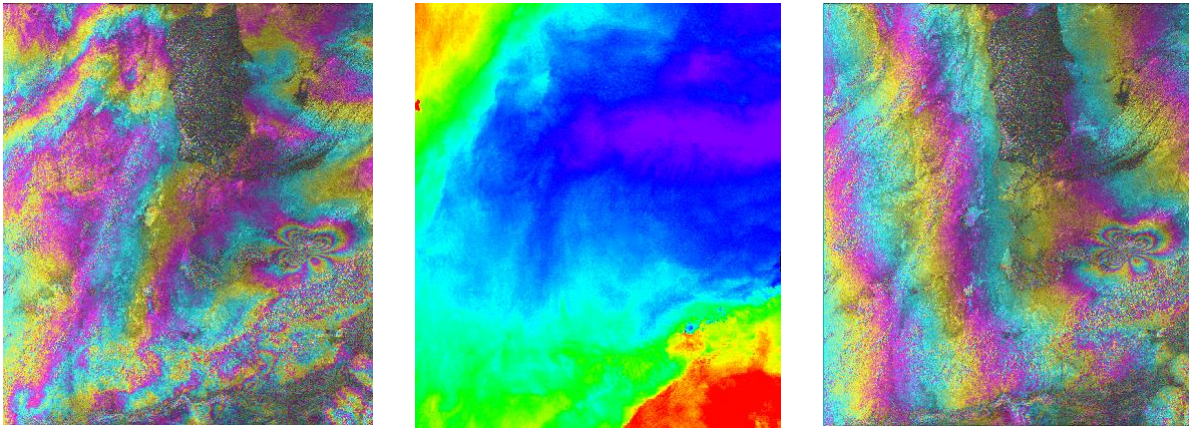


Figure 2: Flattened interferogram, standard case (left). Zenith Path Delay difference in slant range geometry (center). Flattened interferogram after the atmospheric correction (right).

In the previous interferogram the software removed almost completely the atmospheric distortion patterns. What remain are some systematic fringes rising for orbit inaccuracy, but easily removable as a linear trend.

## 2.2 Extension of stacking processing

The second update for the MARSite project is the SARscape interferometric stacking module. We introduced a new tool for the geocoded Zenith Path Delay (ZPD) generation, where the user can automatically create a stack of ZPDs that can be used in the SBAS or PS processing steps.

The ZPDs are extracted over one same area covered by the SAR acquisition at the same time. The user shall provide the list of SAR acquisitions and specify which sensor must be used for the ZPDs extraction. When the MERIS sensor is used, the data gathered through optical acquisitions matching the corresponding ASAR acquisitions must also be provided.

When OSCAR or ECMWF sensors are used, the software requires an internet connection to automatically download the necessary parameters and information from the Web. The result consists in a stack of raster files at different resolutions, depending on the selected sensor. The software will perform the download, the geocoding, the mosaicking of the water vapor, and eventually the conversion to ZPDs.

Figure 3 depicts our tool for the Atmospheric Layer extraction using a specific case study based on OSCAR data covering a desert area in the United Emirates. The processing is performed by using 30 ASAR acquisitions, but only 28 ZPDs have been downloaded: the two remaining ZPDs have been discarded because of the excessive cloud coverage.

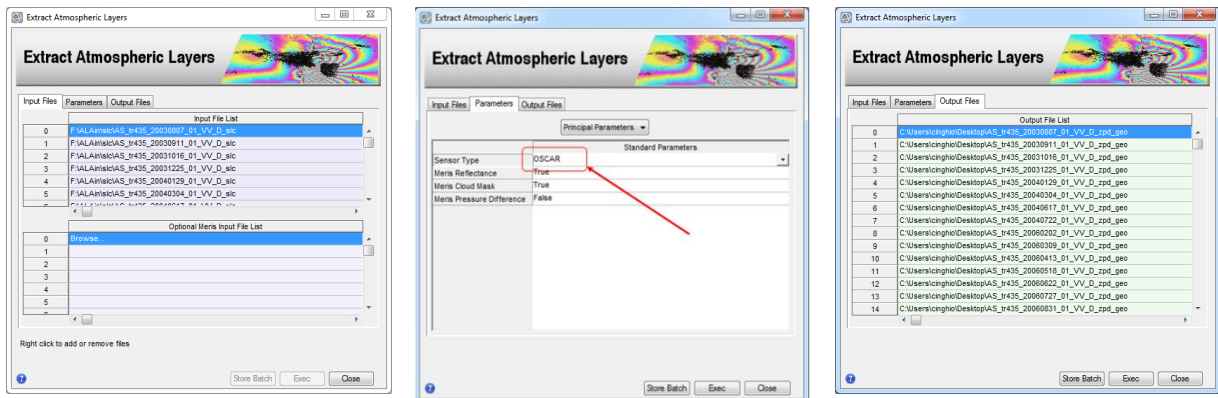


Figure 3: SARscape tool for the automatic Geocoded Zenith Path Delay generation. The user must specify the input SAR acquisition list (left), the atmospheric processing sensor type among MERIS, OSCAR, and ECMWF (center), and the output *\_zpd\_geo* file list (right).

Figures 4 and 6 show the impact of the refined processing on a stack of SBAS-processed images using the OSCAR sensor.

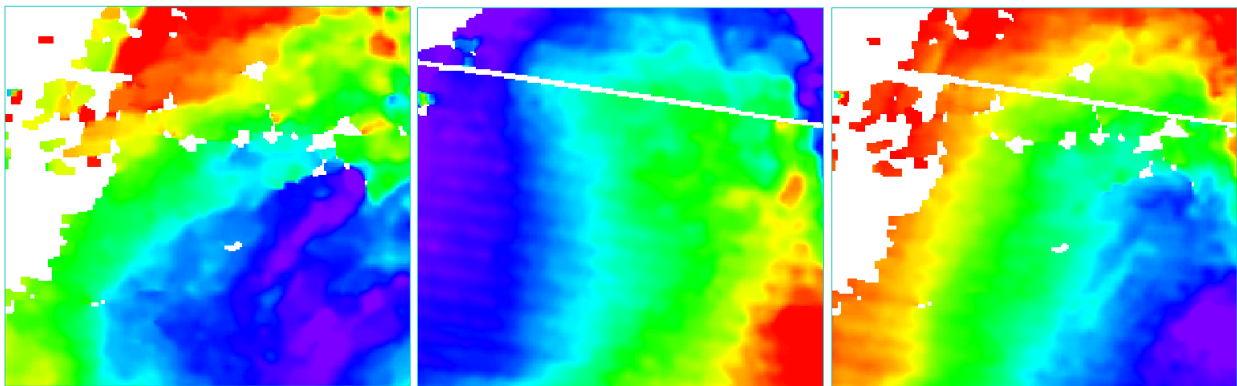


Figure 4: Geocoded Zenith Path Delay for two SAR acquisition date (left and center) and the geocoded Zenith Path Delay difference between the same two acquisitions (right).

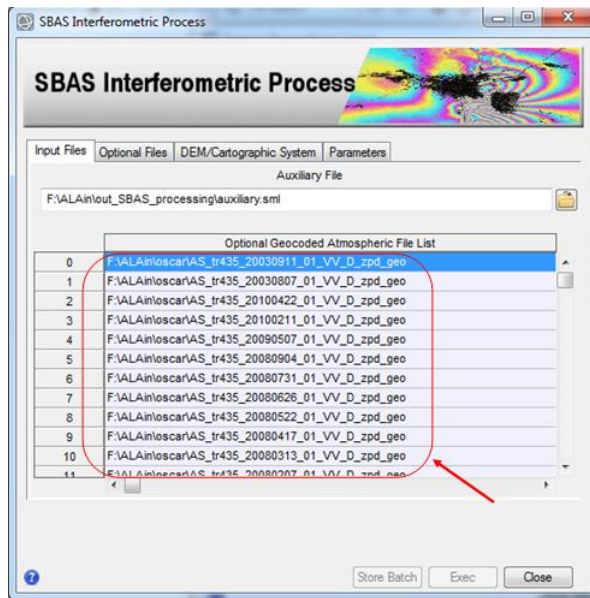


Figure 5: New SBAS Interferometric Process. Now the software accepts a geocoded Zenith Path Delay list of files as input and automatically subtracts them from the corresponding interferograms.

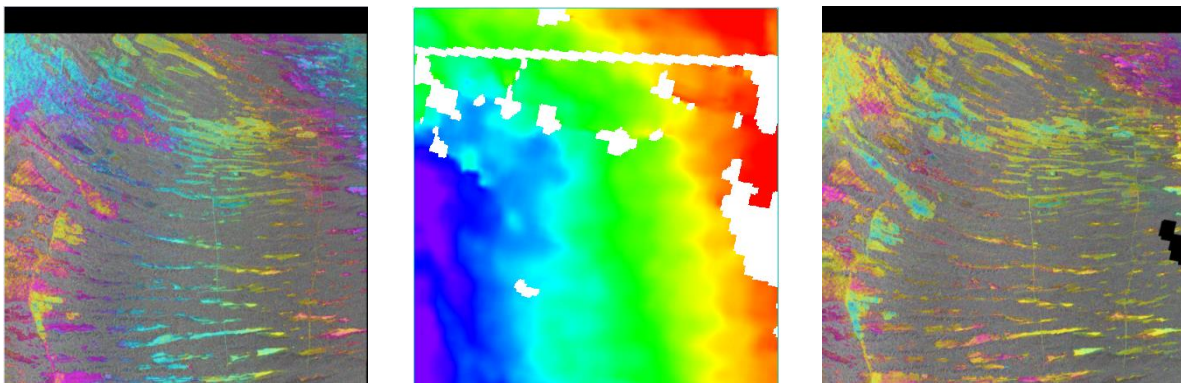


Figure 6: Flattened interferogram, standard case (left). Zenith Path Delay difference in slant range geometry (center). Flattened interferogram after the atmospheric correction (right).

## **Annex I: Downloads**

The latest version of SARscape 5.1 that includes the new features described so far is available at this address:

[http://www.sarmap.ch/beta\\_51/](http://www.sarmap.ch/beta_51/)